



CRE | Climate Ready  
Engineering

A discussion of the One Sydney Harbor  
Project –

Façade automation and shading systems



Oliver  
Turner

horiso®

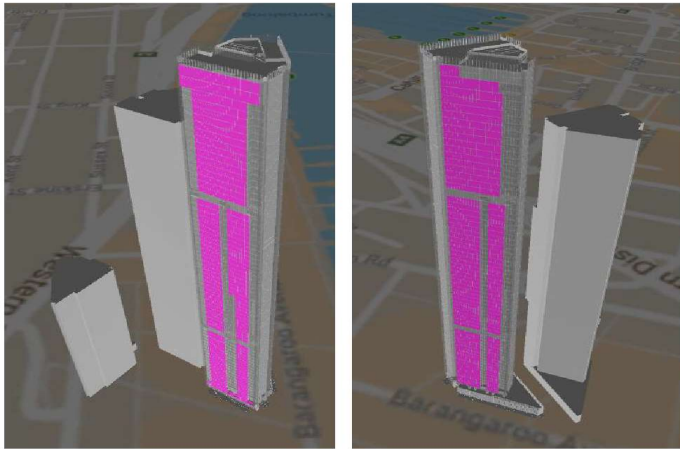
Guthrie Douglas

PERMASTEELISA  
GROUP

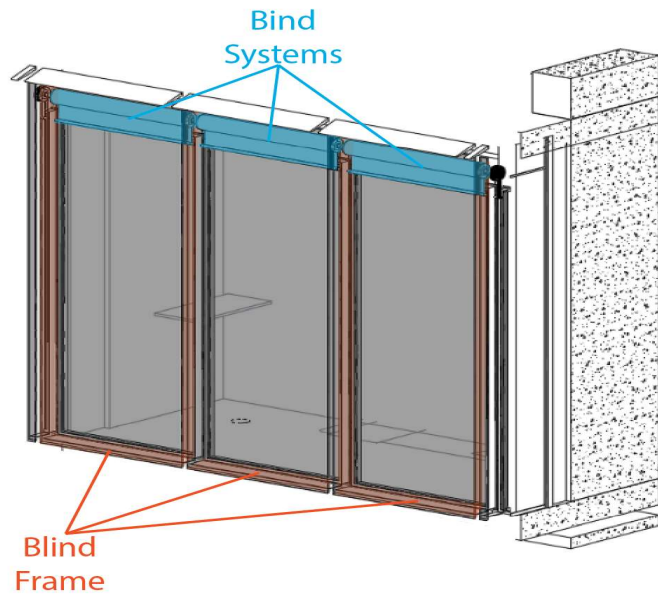
lendlease

RPBW  
ARCHITECTS

OCF locations on North-East façade (R),  
West façade (M), and OCF detail (L).



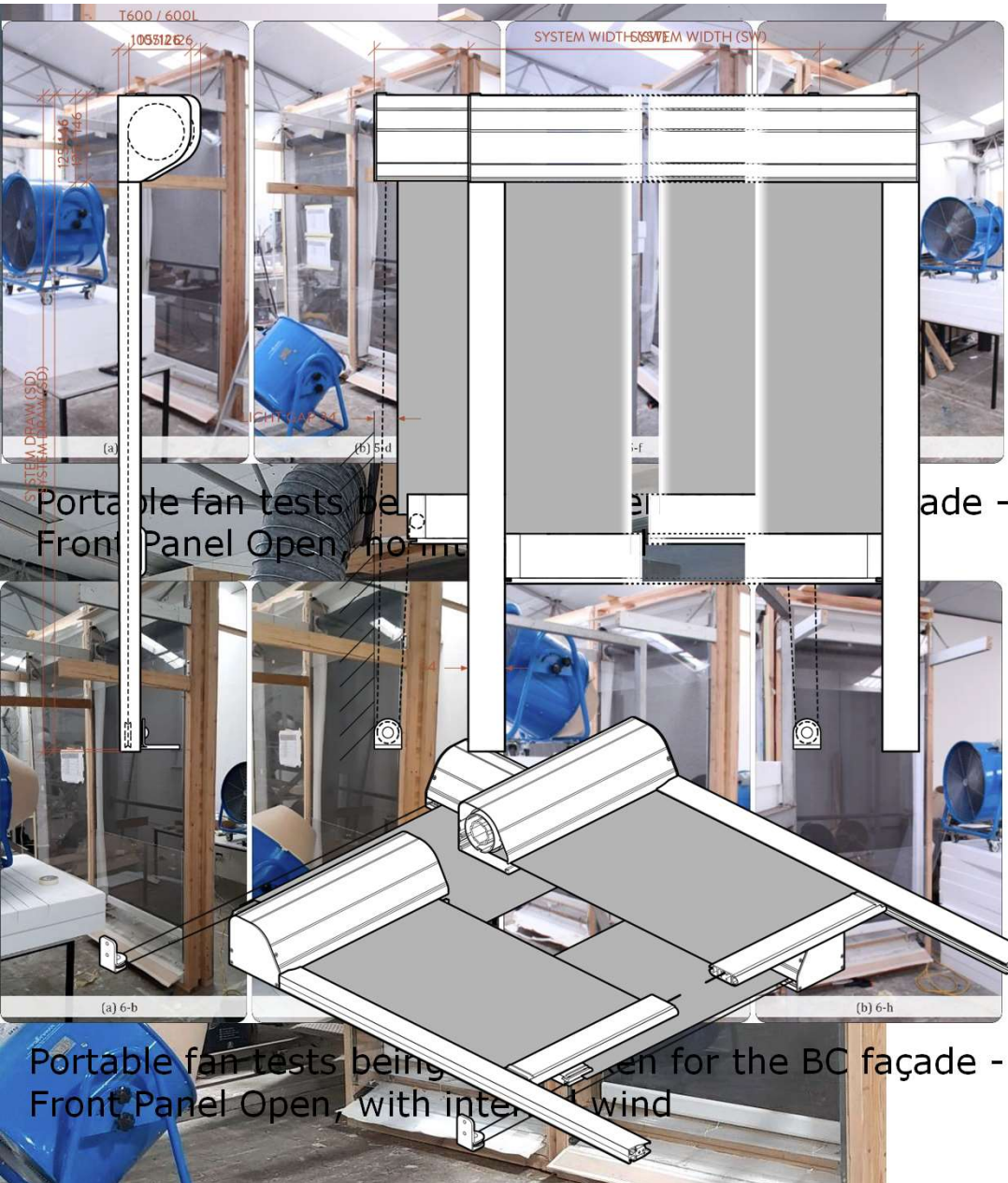
Barangaroo South Tower R1  
Wind risk mitigation strategy



Give us a brief overview of the  
expectation outcomes for this project?

- High end residential space
- OCF – First of its kind in Australia
- Specialised outdoor fabric – Serge Ferrari
- Design considerations
- Control Systems





Take us through your journey from start to finish:

Design - Stage 1

- Off the shelf product

Design - Stage 2

- ZIP System

Design - Stage 3

- Customised shading system

Project Planning - Stage 4

- Installation of blinds into the facade

Integration - Stage 5

- Integrating the Control System

**Key Stats:**

More than 7500 blinds

530 + apartment controllers



Why do you think this design and collaboration was successful

- PISA – The collaboration with CRE + PISA
- CRE – how CRE's involvement was crucial to solving the issues





## Climate Ready Engineering:

- Bespoke Systems
- Transparency
- Collaboration
- Problem Solving
- Façade Engineering
- Value Engineering
- Holistic approach
- Australian Owned and Operated with local and international facilities