



CAROLINE BAY SOUNDSHELL

measure more accurately, while saving time and money



1

ABOUT BAYTEX

Baytex designs, manufactures and sells an extensive range of high quality commercial canopies, marquees, linings and fabric membrane structures.

We are renowned for our innovative designs and quality finish. We keep up to date with a leading edge design team, state-of-the-art production technology, and a dedicated and highly qualified production team.

We were looking for higher production output with similar staffing. So we've invested in cutting and welding technology.



2

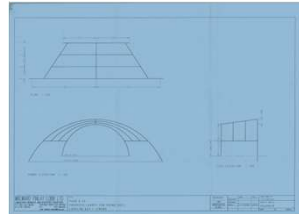
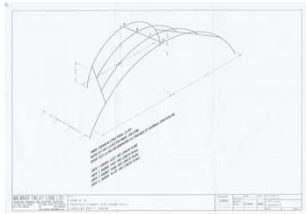
PROJECT

24m x 8.5m Tension Membrane Canopy Replacement



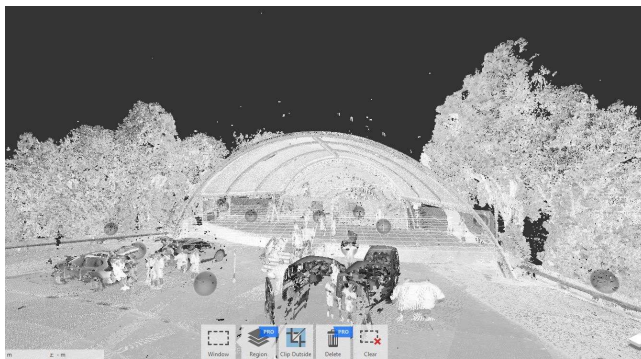
PROJECT CHALLENGES

- Built 25 years ago by another NZ supplier
- Rudimentary reference sketches only available
- Sales team underestimated site measure and installation costs
- Location – Timaru 1109 km from Tauranga. 2hrs by air then 2 ½ by car to site
- 2 person site measure visit required
- (x2) EWP knuckle booms required to complete site measure
- Overnight stay required



3

LOOK TO TECHNOLOGY TO MAKE THE DIFFERENCE



- ATA NZ conference 2023 in Tauranga

Tom Wescott - Fresco Shades. Using technology in business.

SOLUTION FOUND!

- Phoned a business group colleague.
- Synergy Hirebotics – FARO laser scanner \$850.00 per day + freight
- Easy to use
- Extremely accurate results
- Memory card required
- Site measure finished in an hour
- No additional equipment or accommodation



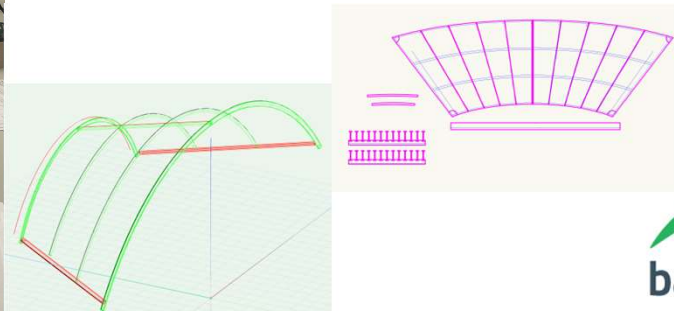
4

DESIGN-DRAUGHTING



LIMITATIONS

- Reference measurements needed
- Placement of scanner is important
- Design skills required
- Autodesk Recap CAD software required to interpret data and consolidate into 3D point cloud
- Speed up design process by 40%



5

INSTALLATION



- Accurate site measurements saved us time on site.
- 3D laser scanner showed imperfections in framing
- Compensation values were perfect
- Upgraded original lacing system to new extrusion system
- Installation timeline for extrusion system and membrane 3 days. Original timeline with lacing system was 5 days



6

CONCLUSION



- Speed and accuracy of site measure saved money
- Saved time in design approximately 40%
- 3D laser scanner showed imperfections in framing
- Use of the 3D laser scanner bought project back into profitable territory
- Most importantly our client received a perfect result and was over the moon



7



8