

**LSAA**  
LIGHTWEIGHT STRUCTURES ASSOCIATION OF AUSTRALASIA



**1996**

*Design Awards*



SEPTEMBER 1996

# LSAA 1996 Design Awards

## **Introduction**

---

The Lightweight Structures Association of Australia is pleased and proud to announce the winners and entrants of the inaugural LSAA Design Awards. The Awards were presented by John Simpson, President of the Royal Australian Institute of Architects Queensland Chapter, at a ceremony during the Conference Dinner of the 1996 LSAA Conference "Lightweight Structures: Creating Space" in Brisbane, Sept 96.

LSAA is an interdisciplinary association representing the professions, industry and academics involved in innovative construction technology and design, which emerged in 1994 from the Membrane Structures Association of Australasia (est. 1981). LSAA's unique multi-disciplinary composition of members is remarkable insofar as it enables LSAA to cut across boundaries found in other more established professional or industry organisations and to address contemporary issues with an open mind. The reason for this phenomenon rests in lightweight structures themselves. Similar to other construction technologies which are at the cutting edge of their particular discipline, such as the aircraft, and automotive industries, lightweight structures are created through an interactive and interdisciplinary team effort. Architects, engineers and specialist designers in close cooperation with specialist contractors, material suppliers and other consultants develop the product from conception to final execution.

Every two years LSAA acknowledges outstanding lightweight structures of predominantly Australasian design content in its Design Awards. This year structures from Australia, Hong Kong and New Zealand were entered indicating the fact that the Australasian lightweight structures industry not only collaborates nationally but also internationally with a strong focus on exporting expertise and products to the Asia-Pacific region and beyond.

LSAA gratefully acknowledges the sponsorship of Structureflex Australia Pty.Ltd. Structureflex Australia's high standing as an industry leader sits well with its initiative in supporting these Awards. We especially welcome this partnership which will assist LSAA to realise its high aspirations for future awards. Many thanks to the Judges - Adrian Begg, Philip Cox, Derham Groves, Richard Hough, John Peyton and Len Stevens - for their valuable contribution, and congratulations to Malcolm Barr and Rowan Murray for their splendid effort in bringing these inaugural awards about.

Vinzenz Sedlak  
LSAA President

## **Judges Remarks**

---

13 projects were entered in four categories: small, medium, large structures and special applications. All projects were subjected to close scrutiny for compliance with the conditions of entry and were considered individually by an interdisciplinary panel of judges in two locations, Melbourne and Sydney. Each project was assessed against five main criteria - design, construction/execution, appearance/aesthetics, function and overall effectiveness - and individual project scores were obtained. Strict procedures were followed and potential conflicts of interest were avoided by determining eligibility of votes by individual judges on a project by project basis. The overall result was achieved by unanimous agreement in a final meeting of all judges.

While the total number of entries has been small, the judging panel was unanimous in its praise for the high quality of the submissions indicating the maturity of the Australasian lightweight structures industry. Awarded projects were deemed to score highly at an international level. Three Awards of Excellence and three Citations of Merit were awarded and these are shown together with all entries on the following pages.

# Awards of Excellence



## Large Structures Category

### **Hong Kong Stadium Roof**

*Bond James Norrie*

*Marsden Pty Ltd.*

## Large Structures Category

### **Brisbane Convention and Exhibition Centre**

*Cox Rayner Architects*

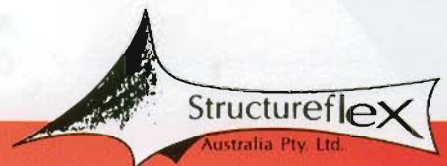


## Small Structures Category

### **Scienceworks Amphitheatre Roof**

*Spacetech Pty Ltd.*

Sponsored by



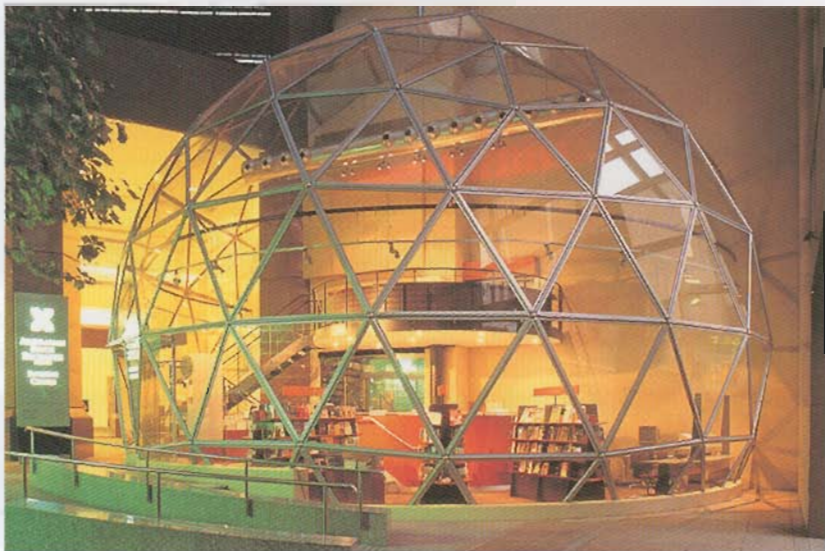
# LSAA 1996 Design Awards

## Citations of Merit

### Small Structures Category

#### **Australian Stock Exchange Display Area**

Connell Wagner Pty Ltd.



### Small Structures Category

#### **Revy Canopies**

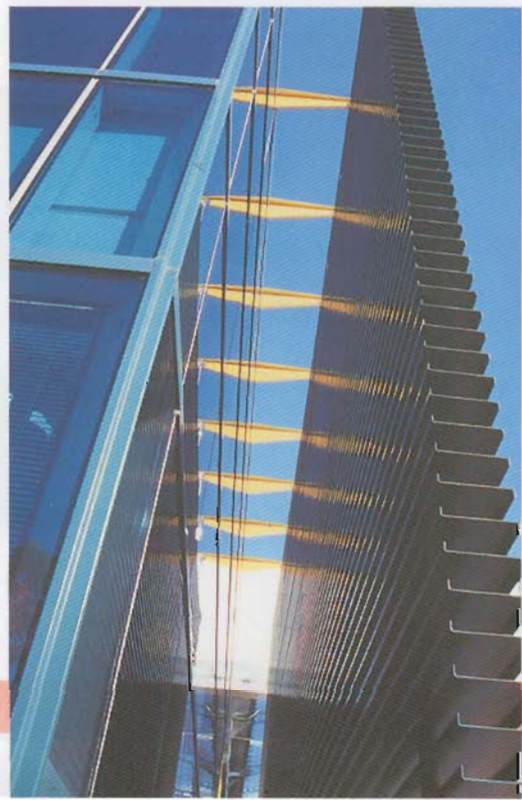
Matrik Structures Pty Ltd.



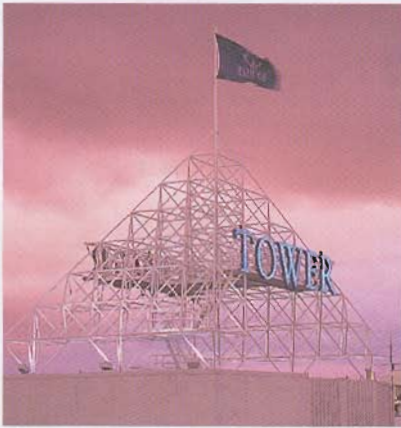
### Special Applications Category

#### **News Ltd Louvre Wall**

Connell Wagner Pty Ltd.



# Entries: Small Structures Category



**Tower Spaceframe Pyramid**  
Matrik Structures Pty Ltd



**McDonald's Restaurant Tensioned Structure**  
Tattersall Engineering Consultants Pty Ltd



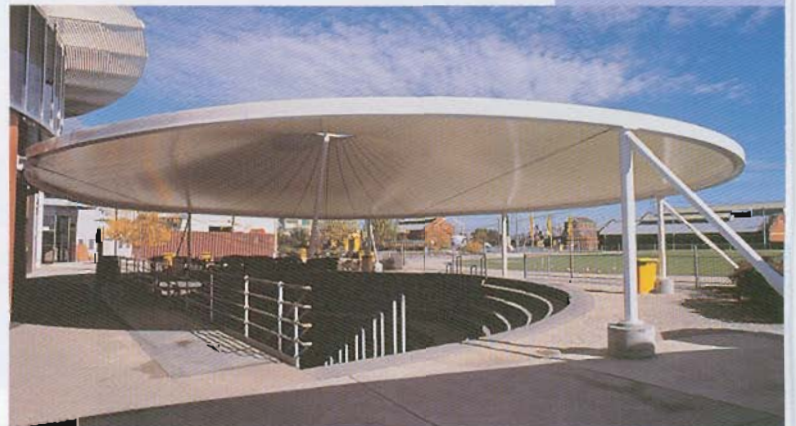
**Revy Canopies**  
Matrik Structures Pty Ltd



**Paul Adams Motors**  
Structurflex (NZ) Ltd



**Australian Stock Exchange  
Display Area**  
Connell Wagner Pty Ltd



**Scienceworks Amphitheatre Roof**  
Spacotech Pty Ltd

Sponsored by



# LSAA 1996 Design Awards

## Entries: Medium Structures Category



**Lakeside Joondalup  
Shopping Centre**  
Permafab Pty Ltd



**Queens Wharf**  
Structurflex (NZ) Ltd

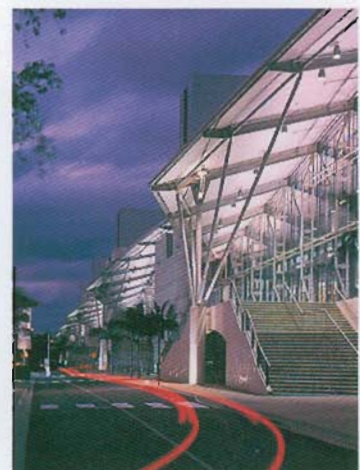


**Gisborne Olympic  
Pool Cover**  
Matrik Structures Pty Ltd

## Entries: Large Structures Category



**Porirua Covered Walkway**  
Architects Workshop Ltd



**Brisbane Convention  
& Exhibition Centre**  
Cox Rayner Architects



**Hong Kong Stadium Roof**  
Bond James Norrie  
Marsden Pty Ltd

## Entries: Special Applications Category



**News Ltd Louvre Wall**  
Connell Wagner Pty Ltd

## Project Team Members

PROJECT	ARCHITECT	STRUCTURAL ENGINEER	SPECIALIST CONSULTANT	CONTRACTOR
Australian Stock Exch Display Area	Woods Bagot P/L	Connell Wagner P/L	Spacotech P/L	Spacotech P/L
McDonald's Restaurant Tensioned Structure	Horward Architects	Tattersall Engineering Consultants P/L	Tattersall Engineering Consultants P/L	Tecraft P/L
Revy Canopies	Lend Lease Interiors P/L	SG Structural Engineers	Wade Lester Consultants P/L	Matrik Structures P/L
Scienceworks Amphitheatre Roof	Office of Building, Victoria	Spacotech P/L	—	Spacotech P/L
Paul Adams Motors	Carnachan Architects	Brent D Clode	McWilliam Consulting Engineers P/L	Structurflex Ltd, NZ
Tower Spaceframe Pyramid	Howard Architects	Nancekivell & Williams P/L	Matrik Structures P/L	Stuart P/L
Queens Wharf	Craig, Craig & Moller	Beca, Carter, Hollings & Ferner Ltd	McWilliam Consulting Engineers P/L	Fletcher Construction Ltd, NZ
Lakeside Joondalup Shopping Centre	Cameron, Chisholm & Nicol / Hames Sharley	Connell Wagner P/L	—	Permafab P/L
Gisborne Olympic Pool Cover	Harry Klynn	Nancekivell & Williams P/L	Wade Lester Consultants P/L	Matrik Structures P/L
Porirua Covered Walkway	Architecture Workshop Ltd	Beca Carter Holling & Ferner Ltd	Wade Lester Consultants P/L	Structurflex Ltd, NZ
Hong Kong Stadium Roof	Hellmuth Obata & Kassabaum Inc	Ove Arup & Partners HK	Bond James Norrie Marsden P/L	Permafab P/L
Brisbane Convention & Exhibition Centre	Cox Rayner Architects	Ove Arup & Partners P/L	—	Leighton Contractors P/L
News Ltd - Louvre Wall	Woodhead Firth Lee P/L	Connell Wagner P/L	—	Austress Freyssinet P/L

This booklet is produced by the Lightweight Structures Association of Australasia

**LSAA**  
LIGHTWEIGHT STRUCTURES ASSOCIATION OF AUSTRALASIA

**Address all enquires to:**

LSAA Secretariat  
P.O. Box 393 Randwick NSW 2031 Australia  
Tel: +61-(0)2-9385 0352 Fax: +61-(0)2-9398 3485  
Email: v.sedlak@unsw.edu.au

Sponsored by

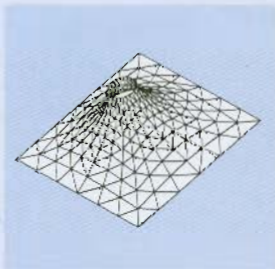


# SO PRACTICAL... SO BEAUTIFUL

The permanence of STRUCTUREFLEX fabricated shade sails.



*Forster Village Shopping Centre*



*Sydney Harbour Casino*



*Brisbane International Terminal courtesy of the Federal Airports Corporation.*

Structureflex Australia's architecturally designed and engineered tension membrane structures have been used to enhance such major new projects as the Sydney Harbour Casino and the Brisbane International Terminal.

These structures are ideal for covering large outdoor entertainment areas, shopping centres, tennis courts and stadiums.

Structureflex Australia's internationally award winning Forster Village Shopping Centre structure amply demonstrates the versatility of this product.

Rising above the surrounding shops, the architecturally designed tension membrane structure allows the Centre Management to utilise the newly covered areas as additional promotional and entertainment venues.

Utilising the latest PVC fabrics and computer design facilities Structureflex Australia is able to offer clients a complete design, fabrication and erection service.

**STRUCTUREFLEX Australia Pty Ltd**  
18-20 Babdoye Street  
Loganholme, Queensland 4129  
Australia  
Telephone: +61 07 3801 1840  
Facsimile: +61 07 3801 1100



Send for a colour brochure available in Thai, Indonesian, Malay or English.